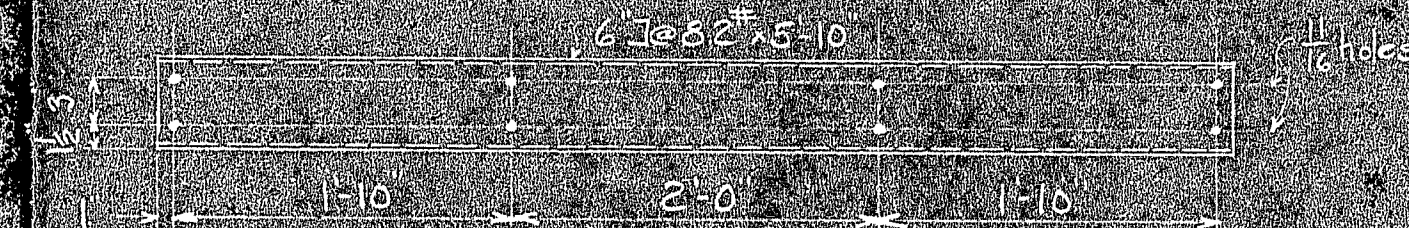
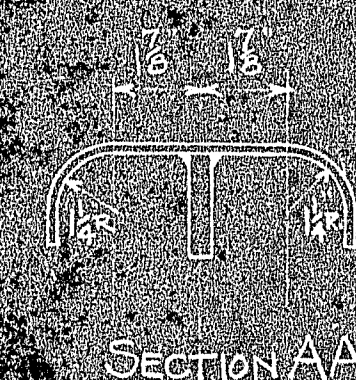
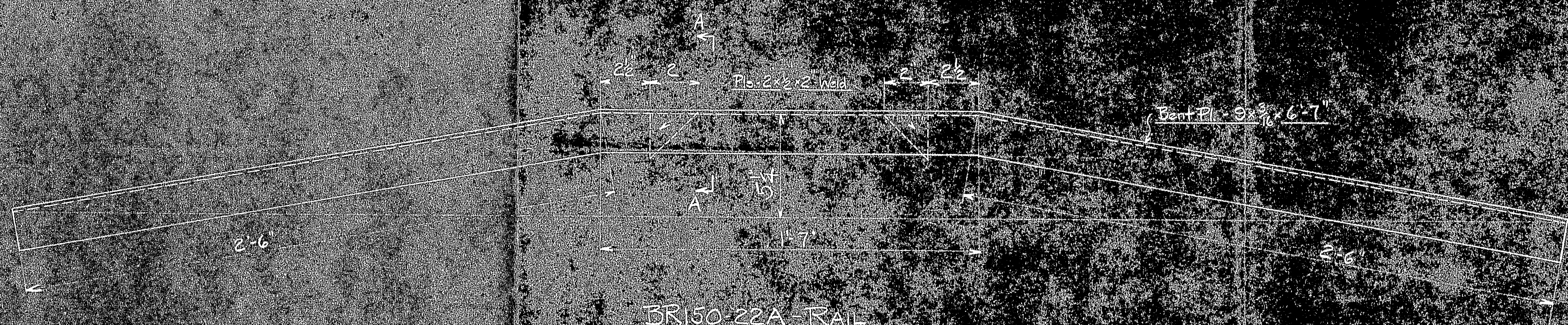
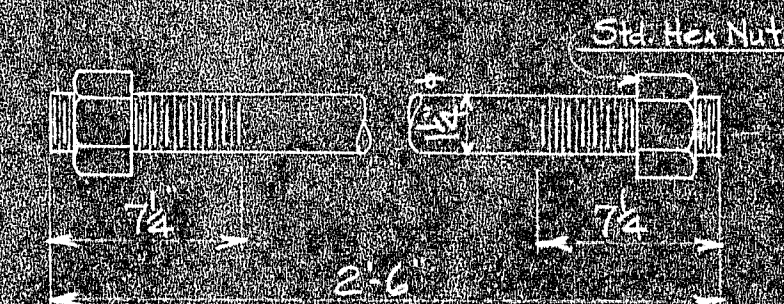


RAIL FOR JUMPING NEW CABLE BANDS

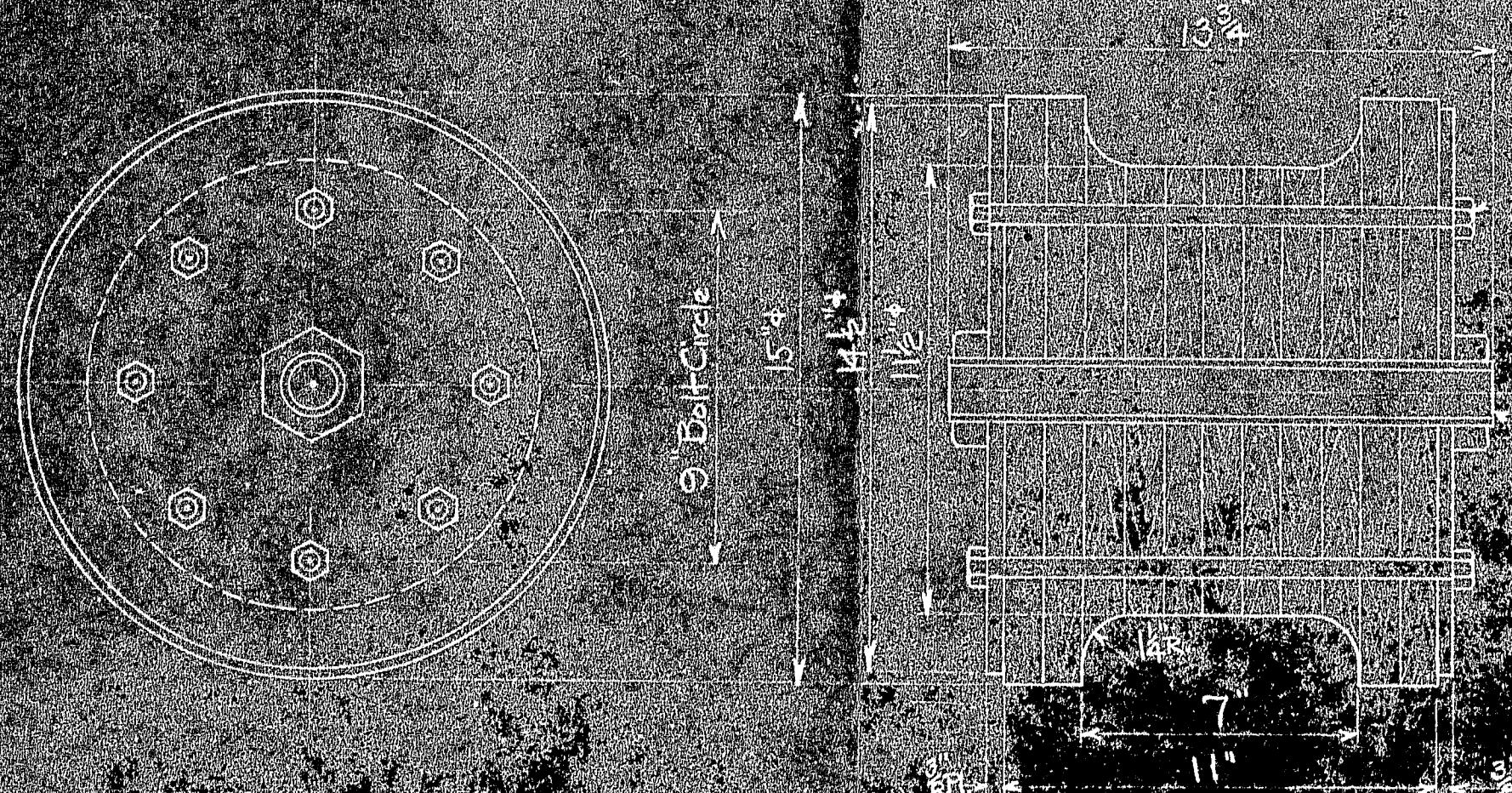


To replace SK2C

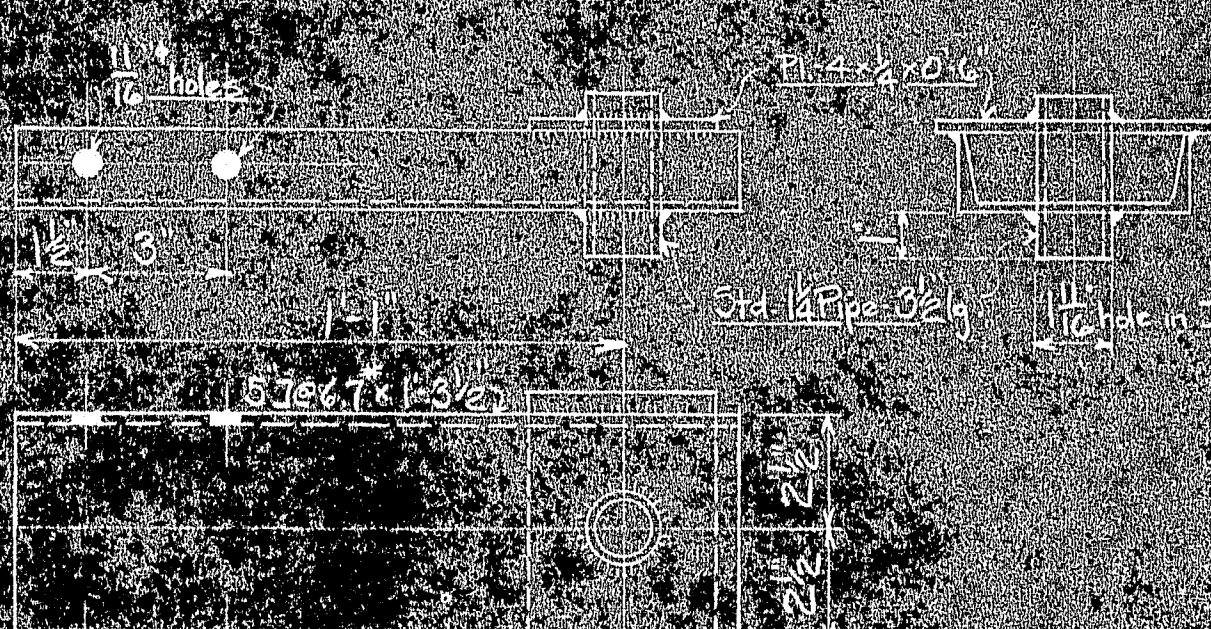


Make from SAE 1045 Cold Drawn

To replace SK2J



Make from maple approx. 1 1/2" thick Glue all laminations.



To replace SK2K and SK2L when inside platform is removed.

MARK	REQ'D	MAT'L	REQ. NO.	NAME	REMARKS
BR150-22E	4	Steel		Bar Bolt	
BR150-22D	4	Steel		Channel	
BR150-22C	4	Steel		Channel	
BR150-22B	4	Steel		Wheel	
BR150-22A	5	Steel		Rail	

BILL OF MATERIAL

JOHN A. ROEBLING'S SONS CO., TRENTON, N. J.

DEER JUNE BRIDGE REINFORCEMENT
RAIL FOR JUMPING BANDS AND
WORK CAR ADDITIONS

DESIGNED BY: 4-7-42

APPROVED: 4-7-42

CH. DR. TR. CH.

ENG'R.

MARK	REQ'D	MAT'L	REQ. NO.	NAME	REMARKS
BR150-22E	4	Steel		Bar Bolt	
BR150-22D	4	Steel		Channel	
BR150-22C	4	Steel		Channel	
BR150-22B	4	Steel		Wheel	
BR150-22A	5	Steel		Rail	

MARK	REQ'D	MAT'L	REQ. NO.	NAME	REMARKS
BR150-22E	4	Steel		Bar Bolt	
BR150-22D	4	Steel		Channel	
BR150-22C	4	Steel		Channel	
BR150-22B	4	Steel		Wheel	
BR150-22A	5	Steel		Rail	

